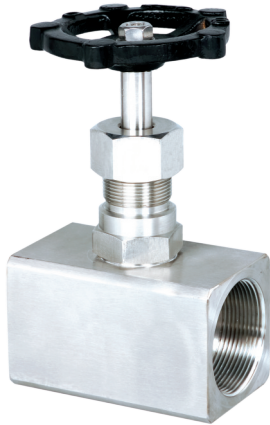


NV32

Needle valve (special series)



Needle valves are designed for use in application requiring complete isolating or throttling of the media. Available with and connection in size 2" (NPT, BSP) and a wide choice in connection of female screwed, male screwed etc. Withstands pressure up to 6000 PSI

Applications

- High pressure line shut off
- Instrument isolation
- Gauge isolation
- Liquid and vapor service

How To Order

Body Material	Stem Packing	Size = P x P1	Connections (inlet x outlet)	Threads
C = Carbon Steel	P = PTFE	22 = 1/8" x 1/8"	FF = Female x Female	N = NPT (ANSI B 1.20.1)
S = SS 316	G = Grafoil	24 = 1/4" x 1/4"	MF = Male x Female	P = BSPP (BS 2779, ISO 228/1)
S4 = SS 304		33 = 3/8" x 3/8"	MM = Male x Male	B = BSPT (BS 21, ISO 7/1)
SL = SS 316L		44 = 1/2" x 1/2"	SW = Socket Weld	
M4 = Monel 400		66 = 3/4" x 3/4"		
M5 = Monel 500		88 = 1" x 1"		
H = Hastelloy C				
B = Brass				

Options

TF : Compliance to NACE standard
SG : For Oxygen service, valves are supplied cleaned, degreased and suitably packed.
GH : Material test certificate*
GO : Hydro test certificate

* Material test certificate will be provided for wetted parts only with chemical composition testing. For others, please consult factory.

Example

To place an order simply refer to the codes in the table.

Valve Type + Body Material + Stem Packing + Size + Connections + Threads + Options

NV32 + S + P + 44 + FF + N = NV32 . S . P . 44 . FF . N . Options

Standard Valve Materials

Valve	Body	Bonnet	Stem	Tip
Carbon Steel	CS A105	CS A105	SS 304	SS 304
Stainless Steel	SS 316	SS 316	SS 316	SS 316
Monel	Monel	Monel	Monel	Monel

Note : Other combination sizes available on request.
Please contact us for more details.

Note : Specifications and dimensions given in this product catalogue represents the state of engineering at the time of printing .
Modifications may take place and materials specified may be replaced by others without prior notice.